

## INSTALLATION REQUIREMENTS

- **Dimensions:** 810mm x 660mm x 1850mm (32" x 26" x 72")
- **Net Weight:** 210 Kg (460lb)
- **Compressed Air:** 7.0 to 9.0 Bar (100 to 130 psi), 12mm bore (1/2") min. connection
- **Electrical Power Supply:** Single phase, < 5A, 230V (50 Hz) or 110V (60 Hz), (internal selection switch)
- **Water Supply:** 2 to 4 Bar (30 to 60psi), Treated water, (Hardness: < 250ppm calcium carbonate)
- **Outlet:** 25 to 50mm (1" to 2") - water discharge



**SOMEX**  
... INNOVATION

Specialists in design and manufacture  
of test equipment primarily for the  
beverage Industry



**SOMEX**  
... INNOVATION

Somex Ltd. Unit 2 Environmental Industrial Park Macroom Co. Cork Ireland

**Tel:** 00 353 (0)26 20531

**Fax:** 00 353 (0)26 20549

**Email:** info@somex.ie

[www.somex.ie](http://www.somex.ie)



**DELTA 3000**

COMBINATION GLASS AND PET BOTTLE PRESSURE TESTER



# SOMEX

## DELTA 3000

COMBINATION GLASS AND PET BOTTLE PRESSURE TESTER

### PRODUCT OVERVIEW

The Somex Delta 3000 has been designed to provide flexibility and speed for pressure testing Glass and PET bottles in a wide range of sizes.

Safety and ergonomics are key considerations in the design of the device, as are simplicity of construction, durability and ease of maintenance.

### KEY OPERATING FEATURES

- Innovative self-centring neck holder suits all bottle sizes and types. (Patent Pending)
- Unique sealing head allows removal for seal changing and cleaning without tools. (Patent Pending)
- Fully automatic test cycle initiated by a push of a button.
- Removable debris collection tray for ease of cleaning and removal of bottle fragments.
- Large, high visibility safety door with CE standard interlock for safe, clear observation of the test process.
- Selectable post-test wash-down of test chamber and remote bottle release helps avoid risk to operator from bottle fragments.

### USER INTERFACE FEATURES

- Easy setting of test profiles using clear graphic display and large keypad.
- Help button for immediate display of relevant tips.
- Function key navigation of operator display.
- Large memory for storage of test profiles with user defined names.
- Bar graph and digital display of actual pressure status.
- USB printer connection.
- Facility for user set-up of pressure offset for accelerated testing such as per ASTM standard C147-86.

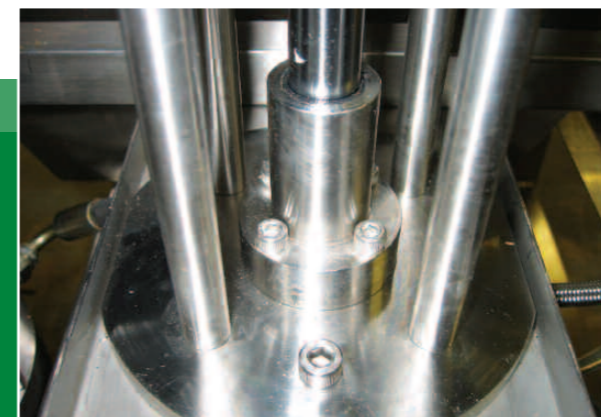


### TECHNICAL FEATURES

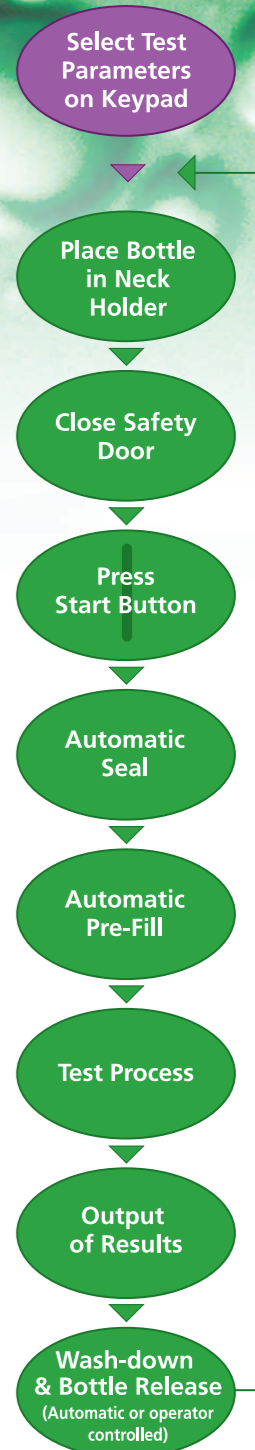
- Sealing head uses 'Pressure multiplication' principle - provides reliable pressure sealing without applying excessive stress to the bottle.
- Industry proven electro-pneumatic technology used to generate closely controlled water pressure for test.
- Siemens control system - accurate, reliable and trustworthy.
- Micro Memory Card (MMC) for storage of control program - easy, on-site program upgrade and/or customisation to suit user requirements.
- On-screen calibration routine - fast and easy.
- 0 - 300 psi (20 Bar) test range for PET.
- 0 - 1000 psi (70 Bar) test range for Glass.
- Volume measurement with % expansion calculation function for PET test.
- Corrosion resistant stainless steel construction.

### ADVANTAGES

- No requirement for specialised high pressure gas or air supply - simply uses standard industrial compressed air.
- Low pressure, high volume test for PET bottles and high pressure, low volume test for Glass bottles - all in one device.
- CE marked in compliance with relevant directives.
- Additional features such as wash-down and auto-release to aid operator safety and efficiency.
- Competitively priced.
- Industrial grade components from industry leading manufacturers.



TEST PROCESS



# SOMEX

... INNOVATION